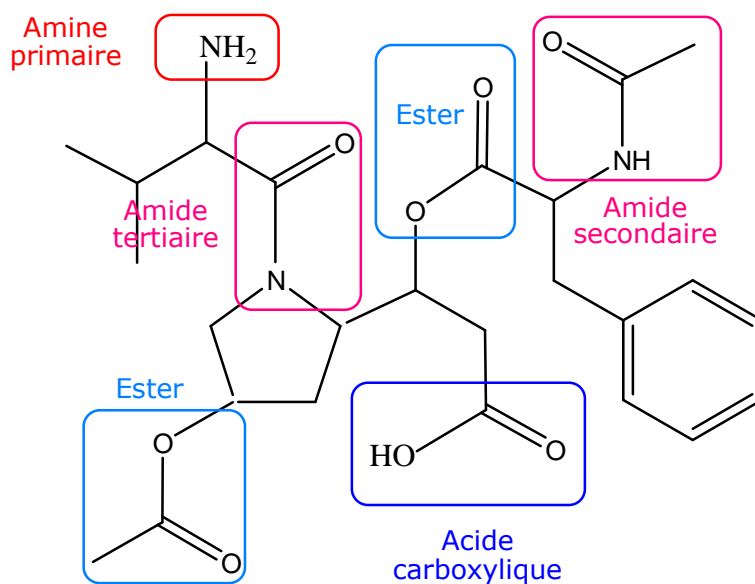
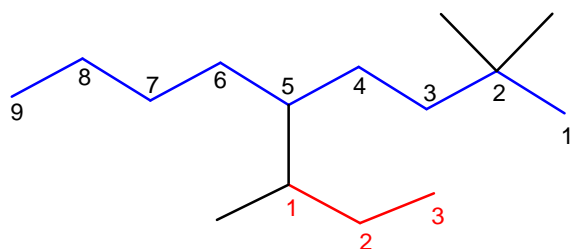


Correction des Travaux dirigés (2012-2013)

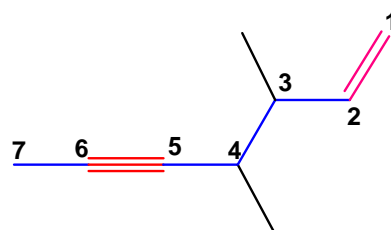
**Exercice n°1**



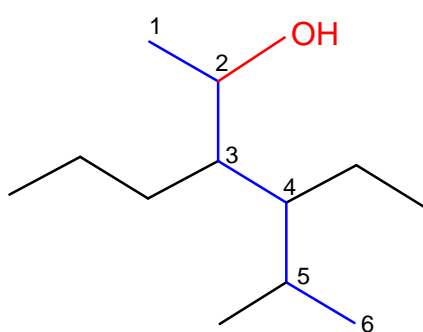
**Exercice n°2**



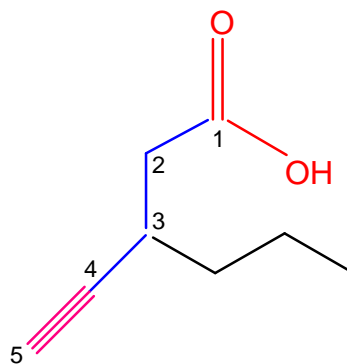
2,2-diméthyl-5-(1-méthylpropyl)nonane



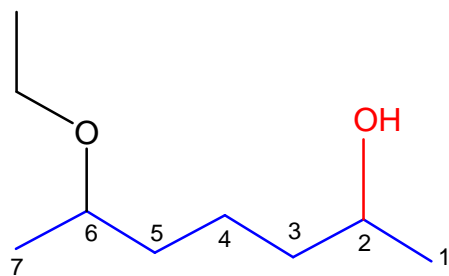
3,4-diméthyl hept-1-èn-5-yne



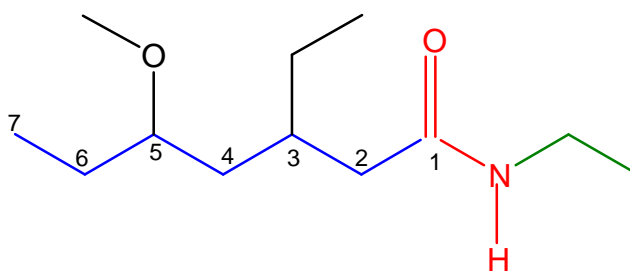
4-éthyl 5-méthyl 3-propylhexan-2-ol



Acide 3-propylpent-4-ynoiïque

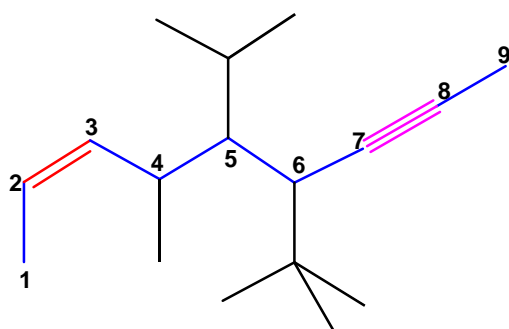


6-éthoxyheptan-2-ol

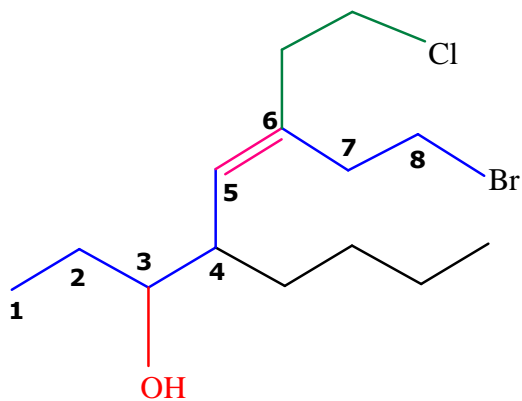


N-éthyl-3-éthyl-5-méthoxyheptanamide

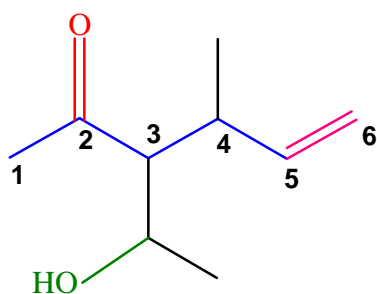
**Exercice n°3**



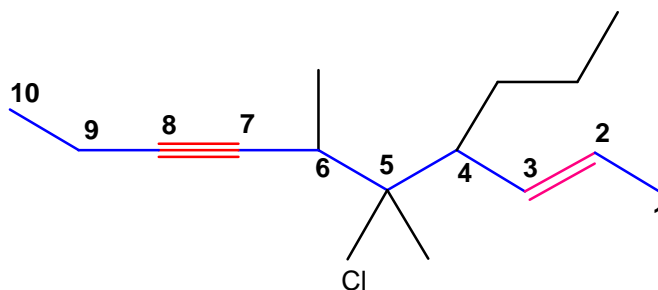
6-tert-butyl-5-isopropyl-4-méthylnon-2-èn-7-yne



8-Bromo 4-butyl 6-(2-chloroéthyl)oct-5-èn-3-ol



3-(1-hydroxyéthyl)-4-méthylhex-5-èn-2-one



5-chloro 5,6-diméthyl 4-propyldéc-2-èn-7-yne